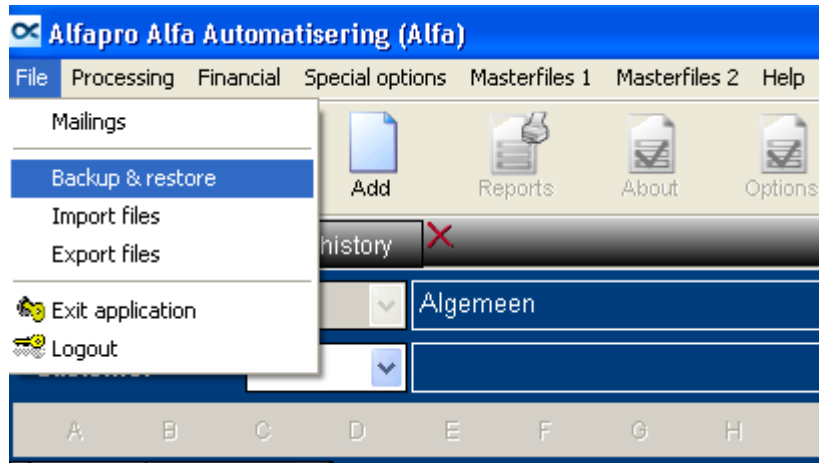
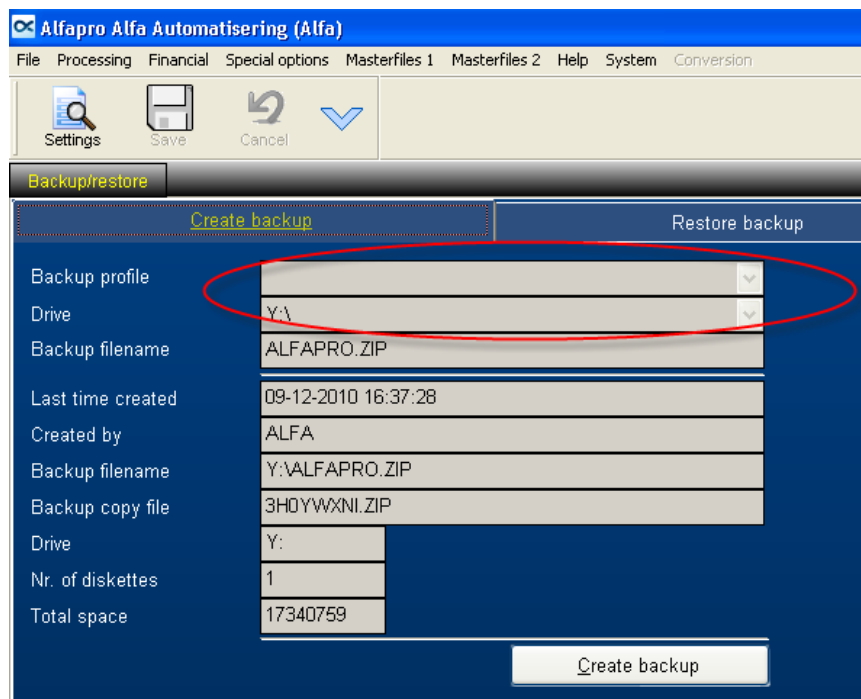


Creating a backup !

It's good practice to create backups regularly!



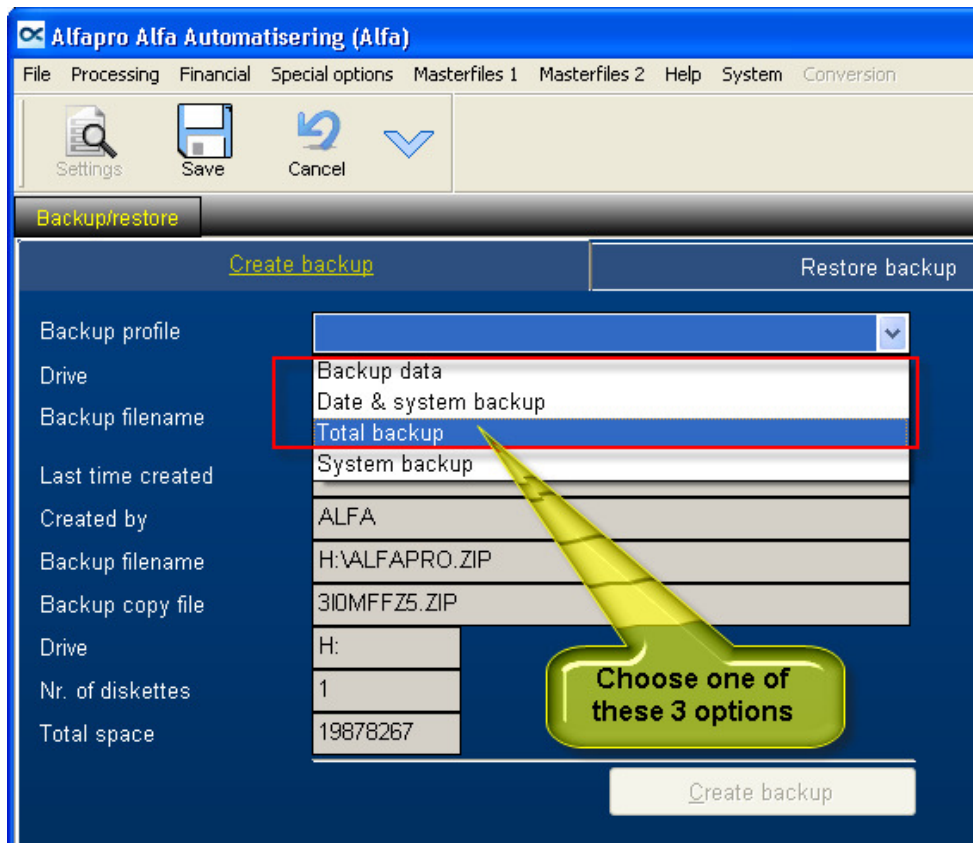
Be sure the right profile active ! If not please select one.



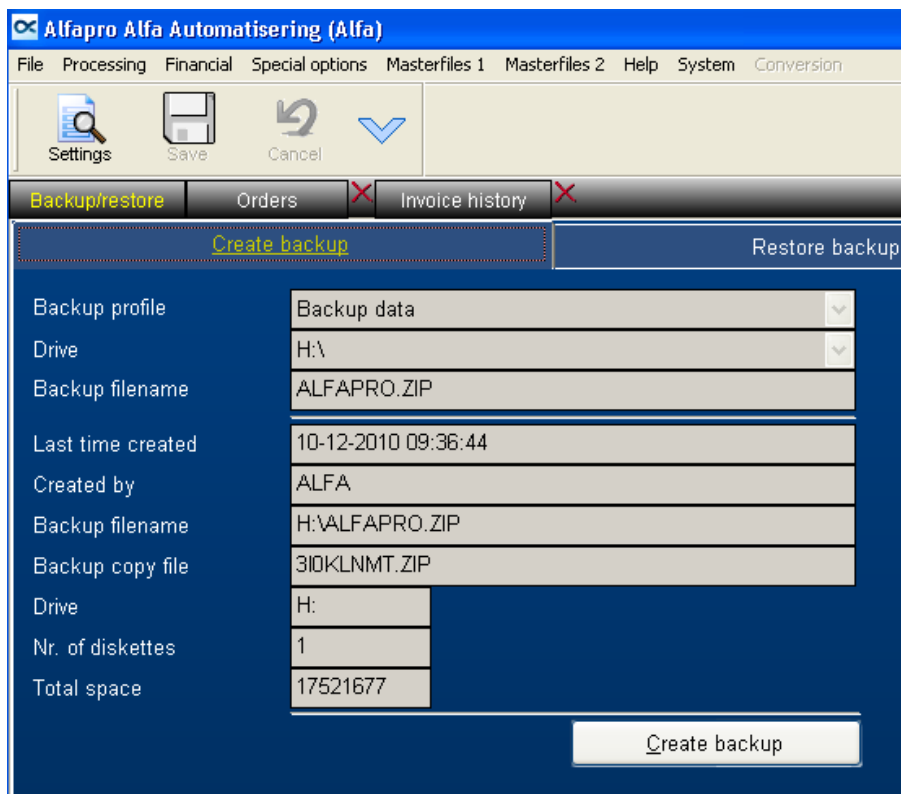
Select the right profile for the the moment

Best is to select "Total backup" for weekly or monthly backups or before critical changes are done (example: closing financial year) and "Data & System" for daily backups.

System Backup will NOT backup your active data, it only will backup your system settings.

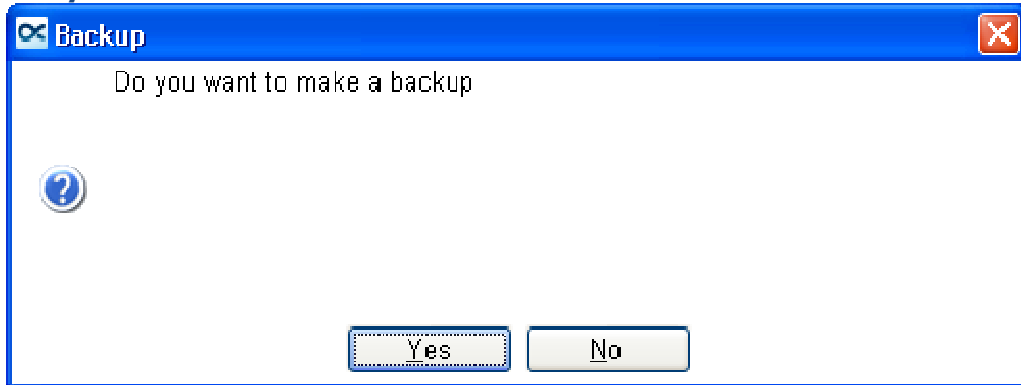


You can change settings using the 'Settings' button on top, you can, if needed, change the target Drive.

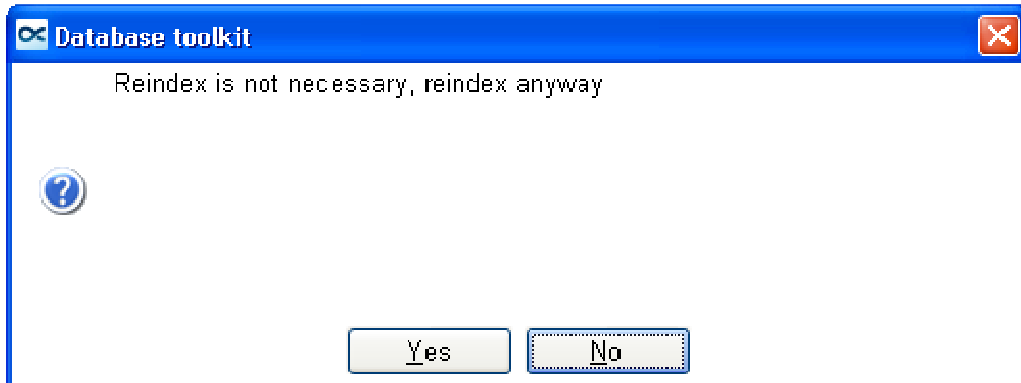


Press button **Create Backup** to start **Backup**

Are you sure ?



Press No



After initializing you get this screen showing the progression. When finished the program will be closed.

